

# SEASIDE *story*



**LIVING** Floor-to-ceiling sheer curtains in Alhambra Sade fabric from Elliott Clarke provide an ethereal backdrop to the living space when it's not open to the verandah. Cleo sofa from Jordan, reupholstered in Westbury Textiles Washed Luxembourg linen. Rug, Robyn Cosgrove. The coffee table and cushions were custom-designed by Julieanne. The ceramic knots on the table are by Minaal Lawn, the pot is from Orient House and the tray was from a flea market in France.

A wander around Sydney's waterfront resulted in this couple snapping up a beachside abode that truly embraces its natural surroundings.

STORY *Hanna Marton* | STYLING *Megan Morton* | PHOTOGRAPHY *Pablo Veiga*



**ENTRANCE** Interior designer Julieanne Henry admires the view from a Gubi 'Tropique' dining chair, sourced from Cult Design. *Speak Softly of Days (I)*, an artwork by Jenny Topfer, adds texture and splendour to this three-bedroom harbourside apartment. The existing floors were resanded and resealed. Pots, Orient House.

**S**ome people take walks to clear their head. Others, such as the owners of this waterfront apartment on Sydney's Northern Beaches, pound the pavement and make major life decisions. Kirsty had just returned to Australia after living in New York and San Francisco, and, with her partner Peter, was redesigning a two-storey, four-bedroom house in a quiet suburb - that she had owned for years - with interior designer Julieanne Henry at the helm.

"We were a few months into that process, then one day Kirsty and Peter went out for a walk around a bustling harbourside village," says Julieanne. "I got a call that afternoon from Kirsty, saying, 'We're downsizing to an apartment and I'm selling my house!'"

And just like that, Julieanne changed tack. She got to work, adapting her and Kirsty's design choices to suit the spacious, modern three-bedroom beachfront apartment. With very few ►



**LIVING** An EcoSmart ethanol fireplace works seamlessly with Eco Outdoor Pendell limestone pavers. Cream IXIA vase, Hattie Molloy. Bud vases, Kate Monckton Ceramics. Red and white pots, Orient House. Wall lights with custom-made shades, The Montauk Lighting Co. Walls painted in Resene Half Albescent White.

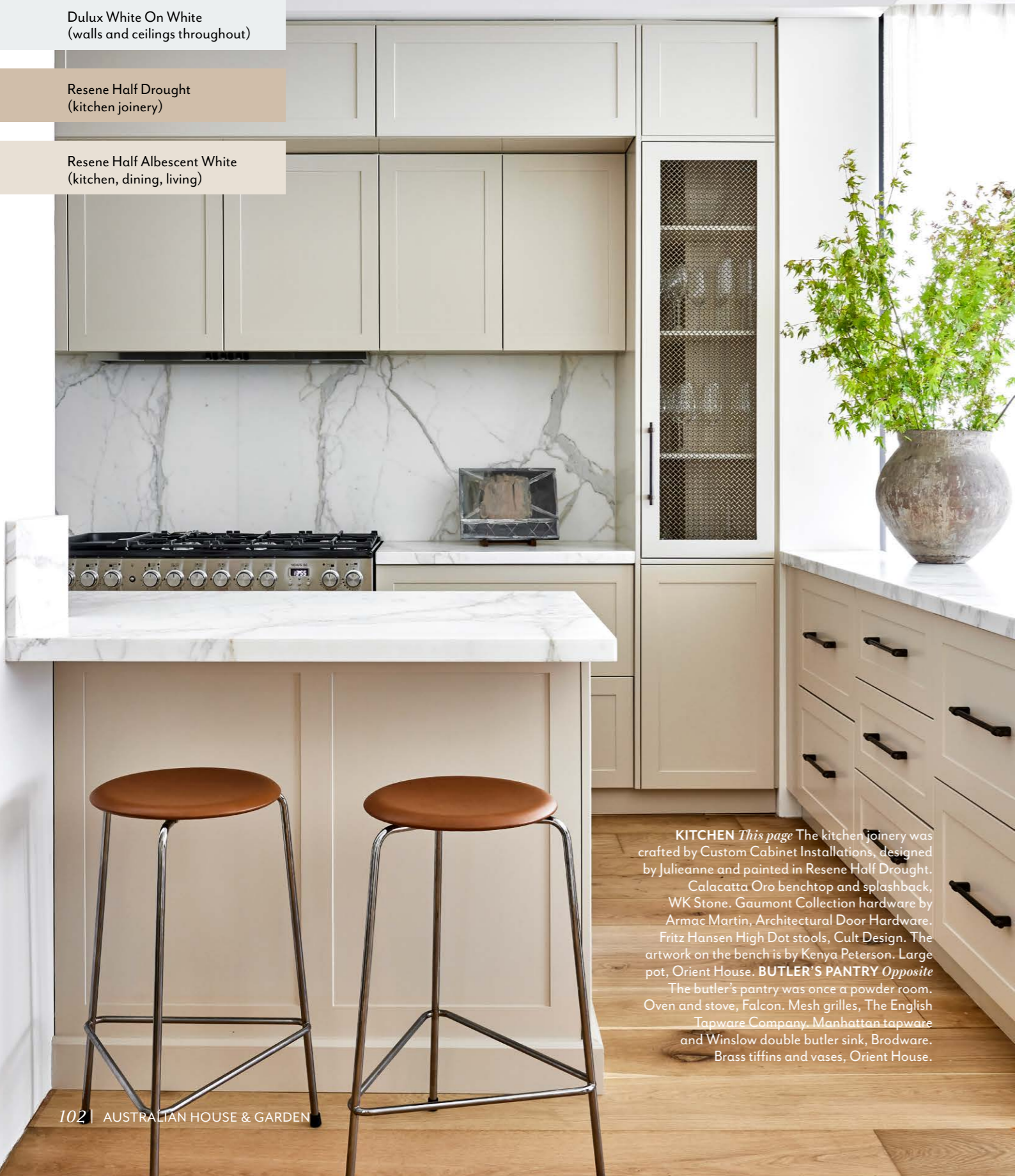
**DINING** Easy access from the kitchen means owners Kirsty and Peter can serve meals at the oak dining setting, custom-made by Orient House, or at the outdoor table on the verandah. Cara sculpted pendant, The Montauk Lighting Co. Vessels, Orient House.

**THE PALETTE**

Dulux White On White  
(walls and ceilings throughout)

Resene Half Drought  
(kitchen joinery)

Resene Half Albescent White  
(kitchen, dining, living)



**KITCHEN** *This page* The kitchen joinery was crafted by Custom Cabinet Installations, designed by Julieanne and painted in Resene Half Drought. Calacatta Oro benchtop and splashback, WK Stone. Gaumont Collection hardware by Armac Martin, Architectural Door Hardware. Fritz Hansen High Dot stools, Cult Design. The artwork on the bench is by Kenya Peterson. Large pot, Orient House. **BUTLER'S PANTRY** *Opposite* The butler's pantry was once a powder room. Oven and stove, Falcon. Mesh grilles, The English Tapware Company. Manhattan tapware and Winslow double butler sink, Brodware. Brass tiffins and vases, Orient House.



“I said to Kirsty, ‘Let’s bring the elements of the sand and the sea in’.. and she loved that.” JULIEANNE HENRY

structural changes necessary - the floor plan was almost perfect - she could focus on transforming the interiors into a textured, organic sanctuary befitting the location, without resorting to coastal clichés or the Hamptons aesthetic. “I said to Kirsty, ‘Let’s bring the elements of the sand and the sea in, and make this home a natural extension of what’s around you,’” says Julieanne. “And she loved that.”

And ‘what’s around’ is immediately obvious from the moment you enter the middle-floor apartment, via a lift (it’s one of three units in the block). On the right, a palatial living, kitchen and dining space opens onto a north-west-facing deck with dazzling views of Sydney Harbour. “It’s got beautiful views of the cove and the wharf area,” says Julieanne wistfully. “You also take in a lot of parklands. There’s an ever-changing scene of beautiful boats and ferries coming and going. It’s quite gorgeous.”

“We joke that we bought the deck and the apartment just came with it,” adds Kirsty.

To your left, rooms unfurl from the hallway, including a “dark and moody” media room shrouded in grasscloth wallpaper, separate laundry, a bedroom doubling as a study, a main bathroom and another guestroom with its own verandah. At the end of the hallway is a sepia-toned main bedroom, awash with tactile finishes, a walk-in wardrobe, ensuite and a private courtyard giving off restful riad [Moroccan] vibes. “The courtyard is a wonderful sanctuary with Turkish pots and beautifully finished Indonesian doors,” says Kirsty.

“As you withdraw from the views and get to the back of the home, it becomes a tranquil retreat. It feels calm and lovely,” says Julieanne. “I wanted Kirsty and Peter to feel like they were caught up in a warm embrace.”

Unifying the spaces is a shell-inspired colour palette, from the ‘oysteresque’ herringbone wall tiles in the main bathroom to the glossy Moroccan feature tiles in the ensuite. The hand-painted, sand-coloured kitchen ▶

Paint colours are reproduced as accurately as printing processes allow.



cabinetry provides a humble backdrop for objets d'art - and feasts for lucky dinner guests. As she is passionate about cooking, a top-notch oven was at the top of Kirsty's wish list. Julieanne also updated the kitchen with timeless and elegant Calacatta Oro marble on the benchtops and splashback, new joinery and tapware. To increase the amount of both prep space and storage, she cut through the wall to the existing powder room and converted it to a butler's pantry.

The three-month renovation was relatively seamless, with only an upright piano throwing a small spanner in the works. In the media room, an "ugly poky kind of cupboard" was ripped from an alcove to accommodate Kirsty's beloved piano, which she bought when pregnant with her first child. However, when the piano arrived on site, it didn't fit. "We had to find somebody who could shave just a few millimetres off the piano lid," says Julieanne. "Now it fits and plays perfectly." Custom furniture, lighting, art and rugs - including pieces from Robyn Cosgrove, The Vault Sydney and Angela McNay Designs - complete the picture.

Since moving day in October 2022, Kirsty and Peter have given the chef's kitchen a serious workout, entertaining friends as well as their adult children and one furry grand-puppy, Olive. That inner circle now includes Julieanne. "Once the makeover was finished we missed spending time with each other and we've now become good friends," says Kirsty.

"I'm just waiting for Kirsty to return home so she can cook me a beautiful meal!" says Julieanne, laughing. ▶ *Julianne Henry, Sydney, NSW; juliannehenry.com.au. Ramsay Oliver Construction, Bondi, NSW; ramsayoliver.com. Annie Wilkes Design, Sydney, NSW; @anniewilkesdesign.*

**MEDIA ROOM** *Top and left* Julieanne custom designed much of the furniture and soft furnishings. Rug, Robyn Cosgrove. Kravet grasscloth wallpaper, Elliott Clarke. *Serpent landscape biancheria* and *Serpent landscape pembe* artworks by Belynda Henry. Bookshelf and ceramics, Orient House. Candleholder and fringed cushions, Lucy Montgomery. Gubi 'Tropique' dining chair, Cult Design. Ixia vase, Hattie Molloy. **MAIN BEDROOM** *Opposite* Custom bedhead upholstered in Westbury Cherbourg linen. Linen and cushions, In The Sac. Lamps with custom shades, Water Tiger. Existing Balinese doors in the courtyard were refinished by Steve Chisholm. Pot, Water Tiger. Mirror, Orient House. Kravet grasscloth wallpaper, Elliott Clarke. 18th-century French Provincial commode, The Vault Sydney. Le Sirenuse mirror, Lucy Montgomery. Carafe set, Elias Mercantile. Wardrobe joinery finished in timber veneer. Mix Collection hardware by Armac Martin.





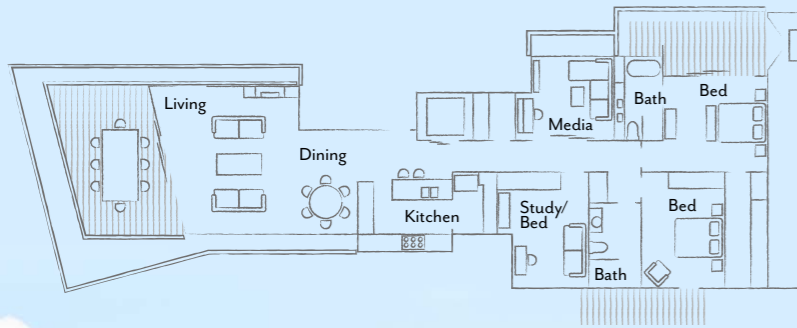
**MAIN ENSUITE** Navurban-finished joinery in Norwood, Custom Cabinet Installations. Mix Collection hardware by Armac Martin, Architectural Door Hardware. Corian benchtop in Linen. Zellige tiles in Latte, Tiles of Ezra. The iron wall light and mirrors were designed by Julieanne and made by a local blacksmith. Corvara freestanding bath, Victoria+Albert.  
**MAIN BEDROOM** *Opposite* Bedside table, MCM House. Custom slip-covered ottoman upholstered in Alhambra fabric, Elliott Clarke. Bedside lamp with custom shade, Water Tiger. Himalayas carpet, Carpeteria. ▶

**THIS IS THE LIFE**

Kirsty says the whole home brings her and Peter “so much joy”, but one of her favourite features is the dream kitchen. “The oven is amazing; the working space is so efficient and effective, as well as conducive to chats with friends and family when cooking!” And when the pair don’t feel like cooking, cafes and restaurants are just a short walk away.



THE LAYOUT



**DECK** The north-west-facing deck offers dazzling views of Sydney Harbour. Drab grey pavers were replaced with caramel-hued La Roche stone flooring from Eco Outdoor. Breeze dining table, Harbour 1976. Malawi chairs, Orient House. Regency Stripe outdoor cushions, Lucy Montgomery. Jars, Orient House.



1

THE SOURCE

*Natural fibres and lashings of white deliver an air of seaside freshness in any location.*



Produced by Shayne Burton. Artwork courtesy of the artist and Fox Jensen Sydney.

1 Le Sirenuse wall mirror, \$1850, Lucy Montgomery. 2 Faux fountain grass, \$90, Freedom. 3 Gubi 'Tropique' outdoor dining chair, from \$1500, Cult Design. 4 Australian House & Garden 'Malabar' side table, \$180, Myer. 5 Ralph Lauren Home 'Cara Sculpted' pendant light, POA, The Montauk Lighting Co. 6 Speak Softly of Days (II) artwork by Jenny Topfer, \$24,000, Fox Jensen Sydney. 7 Dagar planter, from \$495, Garden Life. 8 Olous Aromatique room spray, \$49/50ml, Aesop. 9 Odelia Solid Surface freestanding bath, \$4299, ABI Interiors. 10 B&B Italia 'White Collection' small vase by Marcel Wanders, \$2495, Space. For Where to Buy, see page 192. H&G